



Intelligent leadership and starship navigation

XPENG X9, a seven-seater super-intelligent vehicle



XPENG



Intelligent power control, say goodbye to anxiety and welcome flexible and comfortable driving



Full-range 800V high-voltage SiC silicon carbide platform

- Ultra-long driving range of 702km¹ | Minimum power consumption per 100km: 16.2kWh
- Maximum charging power 330kW | Third-party charging pile efficiency increased by 50%
- 10-minute charging for a driving range +230km²



800V XPower electric drive system

- Super powerful, 0-100 km/h in 5.7 seconds
- Maximum power 370kW | Maximum torque 640N·m
- The overall efficiency is 92% and the highest efficiency is 95.7%
- X-HP 2.0 Intelligent Thermal Management System



The world's only MPV with active rear-wheel steering as standard*

- Minimum turning radius 5.4m | Maximum turning angle ±5°
- The average reduction in direction rotation range is 42°



The only intelligent dual-chamber air suspension in China*

- (Including intelligent dual-chamber air spring, intelligent variable damping shock absorber)
- Maximum adjustment range: 90mm (40mm higher - 50mm lower)
 - Height automatically adjusts with speed | Softness and hardness are adjustable according to driving mode | Chassis preview

Intelligent core, immersive comfort

Starship Universe Cockpit

- Flagship driver seat
- Zero-gravity Space Sofa*
- The only electric stepless adjustment (0-176°) for third-row headrest and backrest in its class*
- Industry-first scientific massage program*
- Ten-point massage | 3 levels of massage intensity | Acupressure effect | 6 intelligent scenarios
- 6-layer cushion structure, comfortable and soft seating



Immersive sensory experience

- Multi-color rhythmic surrounding LED atmosphere light
- 21.4-inch home entertainment ecosystem screen, the largest in its class*
- X Free breath microclimate fresh air system
- Industry-first integrated electric open/close refrigerator with cooling and heating functions*
- 23-speaker Xopera sound system



¹ The range here refers to the CLTC (China Light-duty Vehicle Test Cycle) range, which is derived from tests conducted under specific laboratory conditions according to the CLTC standard driving cycle. In actual usage scenarios, factors such as different environmental temperatures, road conditions, vehicle status, and driving habits can lead to differences in actual cruising range and energy consumption.

² The data is based on the charging of the vehicle at XPENG's self-operated S4 charging piles.

Beyond ADAS, AI-driven intelligent evolution

XNGP all-scenario intelligent assisted driving

- 27 intelligent driving sensors | NVIDIA DRIVE Orin intelligent driving chip
- 254Tops high computing power | high-speed NGP³ | RPA with mobile phone⁴ | LCC⁵

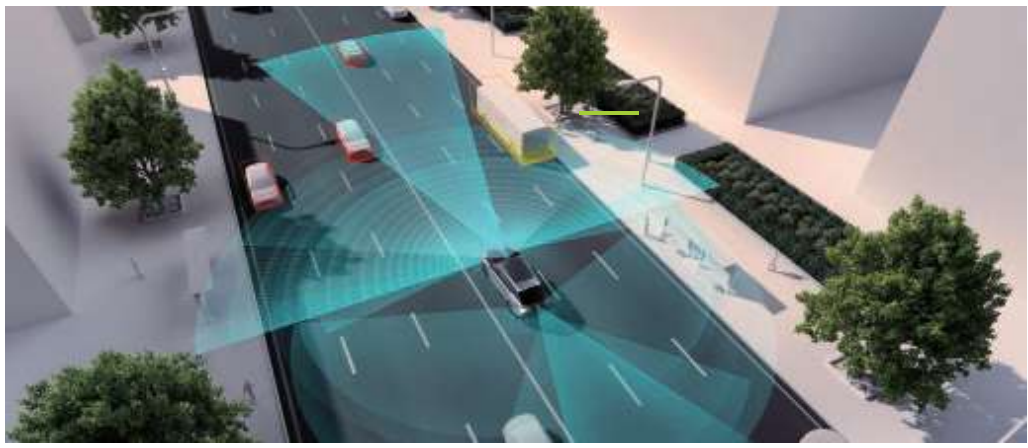
AI Dimensity System

- Powered by the industry-leading Qualcomm Snapdragon SA8295P intelligent cockpit chip
- AI XiaoP | AI bodyguard | Split-screen multitasking | XDock | Smart multi-scenario

³ This function is not available at delivery and will be realised through subsequent OTA upgrades.

⁴ RPA (Remote Parking Assist) supports intelligent park-in and park-out control by means of mobile phone near-field communication.

⁵ LCC (Lane Centering Control) is a comfort driving aid that assists the driver in controlling the steering wheel to consistently centre the vehicle within the current lane, but drivers should still keep their hands on the steering wheel and keep an eye on the road to avoid danger.



Full-range safety and intelligent protection

Designed to global safety standards

- Passed the rear collision safety test standard of China, the US and Europe
- Exceeding US standards for high-speed rear-end collisions, the collision force does not penetrate into the third row⁶
- Meets C-NCAP five-star safety | C-IASI excellent highest safety design standards

Comprehensive passive safety

- Front and rear integrated aluminum die-casting | 46000N·m/deg vehicle torsional stiffness
- 2000MPa cage body + 19-ring safety design

Intelligent Active Safety

- 15 active safety features | 70.9L extra-large side air curtain | six-dimensional battery safety

Unlimited space, infinite possibilities

Superior 7.7m² interior space in its class*

- One-touch access
- 1100mm extra-long electric slide
- 180mm center channel for easy access*
- Invisible sunken storage room, expandable volume 755L-2,554L

Magic space of flexible layout

- The only electrically foldable third-row seat in its class*
- Sunny large flat area | Quiet lounge | Mobile elf castle | Wonderful cinema



Appearance color



Dark Night Black



Crescent Silver



Nebula White

Contact:

Xpeng X9	Standard Range Pro (4x2) A/T	Long Range Pro (4x2) A/T	Long Range Pro+ (4x2) A/T
Overall length (mm)	5,293		
Overall width (mm)	1,988		
Overall height (mm)	1,785		
Wheel base (mm)	3,160		
Minimal turning radius (m)	5,400		
Curb Weight (Kg)	2,640	2,590	
Trunk space (L)	755		
Gross Vehicle Weight (Kg)	3,220	3,170	
Drive train	FWD		
Battery type	LFP	NCM	
Battery capacity (kWh)	84,5	101,5	
AC charging power (kW)	11		
AC charging time (5-100%)	9,5h	11h	11h
DC charging power (kW)	283	317	
DC charging time (10-80%)	20min		
Motor type	Permanent Magnet Synchronous Motor		
Maximal power (kW)	235		
Maximal torque (Nm)	450		
Top speed (km/h)	200		
Charging port	CCS2		
Braking system	Front & rear ventilated braking disc		
Suspension	Front Double Wishbone / Rear H-arm multi link		
Intelligent dual-chamber air spring	Yes		
Acceleration (0-100km/h) (s)	7,7		
WLTP driving range (km)	500	590	590
NEDC driving range (km)	580	690	690
Coefficient of Drag	236		
Hardware System			
NVIDIA DRIVE Orin Supercomputing Platform	1		
Millimeter wave radar (pieces)	3		
Ultrasonic radar (pieces)	12		
Number of cameras (including fatigue monitoring cameras) (pieces)	12		
Sub-meter level high-precision positioning unit	Yes		
XPILOT Driving			
SR environment simulation display	Yes		
Adaptive Cruise Control ACC	Yes		
Lane Centering Control LCC	Yes		
Adaptive Turning Cruise ATC	Yes		
Intelligent speed limit assist SAS)	Yes		
XPILOT Parking			
Enhanced Auto Parking Assist (EAP2.0)	Yes		
Auto Exit Parking Assist (AEP)	Yes		
Remote Parking Assist RPA	Yes		
Remote Vehicle Summon RVS	Yes		
Parking assist with 360° camera	Yes		
Transparent Chassis	Yes		
XPILOT Safety			
Forward Collision Prevention			
Forward Distance Monitoring FDM	Yes		
Forward Collision Warning FCW	Yes		
Autonomous Emergency Braking AEB	Yes		
Traffic Sign Recognition TSR	Yes		
Speed Assistant System (SAS)	Yes		
Intelligent High Beam IHB (automatic switching between high and low beams)	Yes		
Driver State Monitoring (DSM)	Yes		

Side Collision Prevention		
Blind Spot Detection BSD		Yes
Door Open Warning DOW		Yes
Lane Departure Warning LDW		Yes
Lane Keep Assistance (LKA)		Yes
Emergency Lane Keeping (ELK)		Yes
Rear Collision Prevention		
Rear Collision Warning RCW		Yes
Rear Cross-Traffic Alert RCTA		Yes
Reverse car side warning		Yes
Narrow path assistance (automatically activating surround view image when approaching obstacles at low speeds)		Yes
Active rear wheel steering system		Yes
Xmart OS		
Hardware		
Chipset		Qualcomm Snapdragon® 8295
Digital dashboard		Yes
Central control screen-17.3"		Yes
Passenger entertainment screen-21.4"		Yes
Front passenger additional Bluetooth connection		Yes
Mobile Phone Bluetooth key		Yes
Automatic Mobile Phone Unlocking		Yes
Mobile App Remote Control		Yes
App intelligent car locating		Yes
Software		
"Hey XPENG" voice assistant		Yes
Smart Navigation		Yes
3D user interface		Yes
DAB + FM radio		Yes
App Library		Yes
Apple Carplay		Yes
Android Auto		Yes
Welcome Mode		Yes
Meditation Mode		Yes
Over-the-air (OTA) software updates		Yes
Exterior		
LED Auto-sensing high beams and Dipped Headlights		Yes
LED Auto On/Off Headlights		Yes
Headlight height adjustment		Yes
Rain sensing automatic wiper		Yes
External rearview mirror (with electric folding/heating/memory/blind spot monitoring)		Yes
Electric Hidden Door Handles		Yes
Panoramic canopy		Yes
Sky curtain sunshade (front manual/rear electric)		Yes
Soundproof glass (front windshield/first row/second row/sunroof)		Yes
Privacy glass (second/third row/rear windshield)		Yes
Intelligent anti pinch electric sliding door (both sides)		Yes
Four windows one key lifting (with anti pinch function)		Yes
Electric tailgate		Yes
Electric charging cover		Yes
V2L-3.3kW		Yes
20" Aluminium Wheel		Yes

Interior		
Leather Steering Wheel		Yes
Multi color rhythmic surround LED ambient light		Yes
Front row dual 50W air-cooled mobile phone wireless fast charging		Yes
No. of USB		Type C*5 + USB*1 + 12V*2
Integrated cold and hot electric open close refrigerator		Yes
Sound System		
23 speaker XOpera audio system		Yes
2180W external amplifier power/71.6 channels		Yes
Air-conditioning & Heat Pump		
Windless Surrounding Central Air Conditioning		Yes
Intelligent five zones constant temperature control		Yes
Air conditioning electric air outlet		Yes
Multi mode sweeping		Yes
CN95 air conditioning filter		Yes
PM2.5 monitoring and display		Yes
In car air conditioning/intelligent air purification (negative ion)		Yes
Air Quality Control System(AQS)		Yes
Intelligent fragrance system (including 3 types of master customized fragrances) Amber light orange The tranquility of fir trees White and serene	N/A	Yes
Seat		
Exclusive First Row		
Electric driver seat with adjustable 12 ways with 4-way lumbar support /Electric passenger seat with adjustable 12 ways with 4-way lumbar support		Yes
Full grain top layer Nappa leather seats	N/A	Yes
Seat cushion and backrest heating/ventilation (3-Level adjustable)		Yes
Seat position memory/welcome function		Yes
Massage for driver and front passenger (6 intelligent scenarios)		Yes
Exclusive driver's headrest speaker (2)		Yes
Co-pilot boss button		Yes
Flagship second row		
Comfortable aviation seats		Yes
Premium leather seats		Yes
Seat 14 way electric adjustment (including 4-way lumbar support/4-way leg support)		Yes
High quality folding table board * 2		Yes
160mm central channel	Yes	N/A
Pop up cup holder * 2	Yes	N/A
Zero gravity seats		Yes
One click zero gravity sitting posture		Yes
Full grain top layer Nappa leather seats	N/A	Yes
Seat 18 way electric adjustment (including 4-way lumbar support/4-way leg support/4-way headrest)	N/A	Yes
Dual 50W air-cooled mobile wireless fast charging		Yes
Flip over cup holder * 2	N/A	Yes
Seat cushion and backrest heating/ventilation (3-speed adjustable)		Yes
Seat position memory/welcome function		Yes
SPA level ten point massage (6 intelligent scenarios)		Yes
EASY ENTRY One click for easy entry and exit		Yes
Window sunshade		Yes
Super third row		
One click electric magic storage		Yes
Electric stepless adjustment of backrest and headrest		Yes
Armrest cup holder * 2		Yes
Invisible sunken luggage compartment		Yes
Luggage compartment suspension lifting switch		Yes
Third row seat backrest control switch in luggage compartment		Yes
Material		
First and second Row Premium leather seats		Yes

Safety		
Number of Airbags		6
Bosch IPB Smart Brake System		Yes
Electric Stability Program (ESP)		Yes
Electronic parking brake		Yes
Autohold		Yes
Tire-pressure monitoring system (TPMS)		Yes
Driver motorized seat belt with pretensioner (MSB)		Yes
Second row left/right three-point seat belt (pre tension limited force type)		Yes
Third row left/center/right three-point seat belt (emergency locking type)		Yes
Side sliding door electronic child lock		Yes
Seat belt fastening reminder		Yes
Rear ISOFIX®		Yes
Acoustic Vehicle Alerting System (AVAS)		Yes
Uphill/downhill assistance		Yes
Exterior Colors		
Crescent Silver		Yes
Dark Night Black		Yes
Nebula White		Yes
Matte Gray	N/A	Yes
Interior Colors		
Moon Shadow Brown		Yes
Meteorite Black		Yes
Light Gray		Yes